

VS 469.2 AHTS

IMO NR :8302088
 MMSI NR :21 88 62 000
 CALL SIGN :DHXJ2

Class :Lloyd's Register
 Notation :100A1 (AHTS Suspended),
 Fire-Fighting Ship 1
 (3000 M3/h) with Water
 Spray, Oil Recovery,
 RD(2.4), WDL (+)
 LMC, UMS, DP (AM)

Keel laying date :1984
 Re-Fit :2017

Principal Particulars

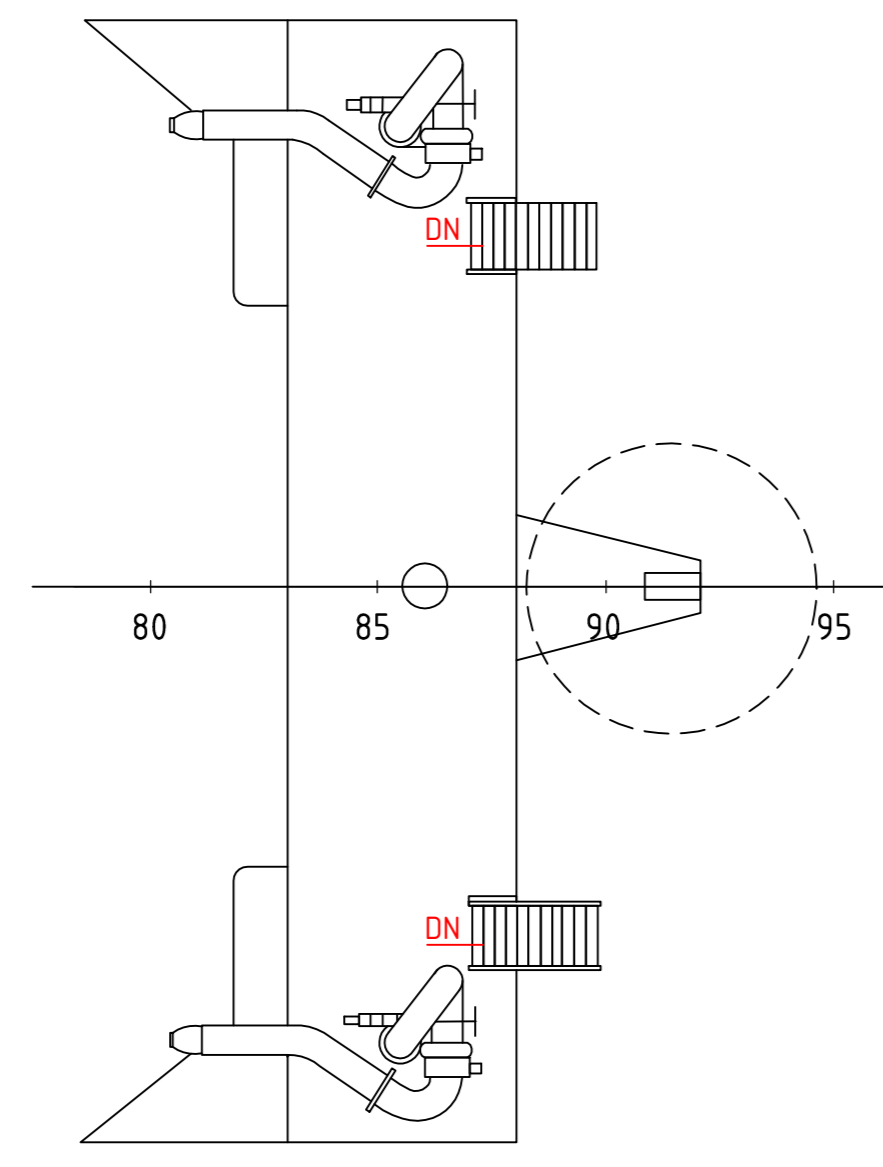
Length o.a. 75.00 m
 Breadth mld. 16.00 m
 Depth 1 Deck 7.40 m
 Depth 2 Deck 4.60/5.00 m

Gross tonnage = 2295 tons
 Net tonnage = 688 tons
 Main propulsion= 4x 2310 kW = 9240kW
 Auxiliary power= 3x 298 kW = 894kW

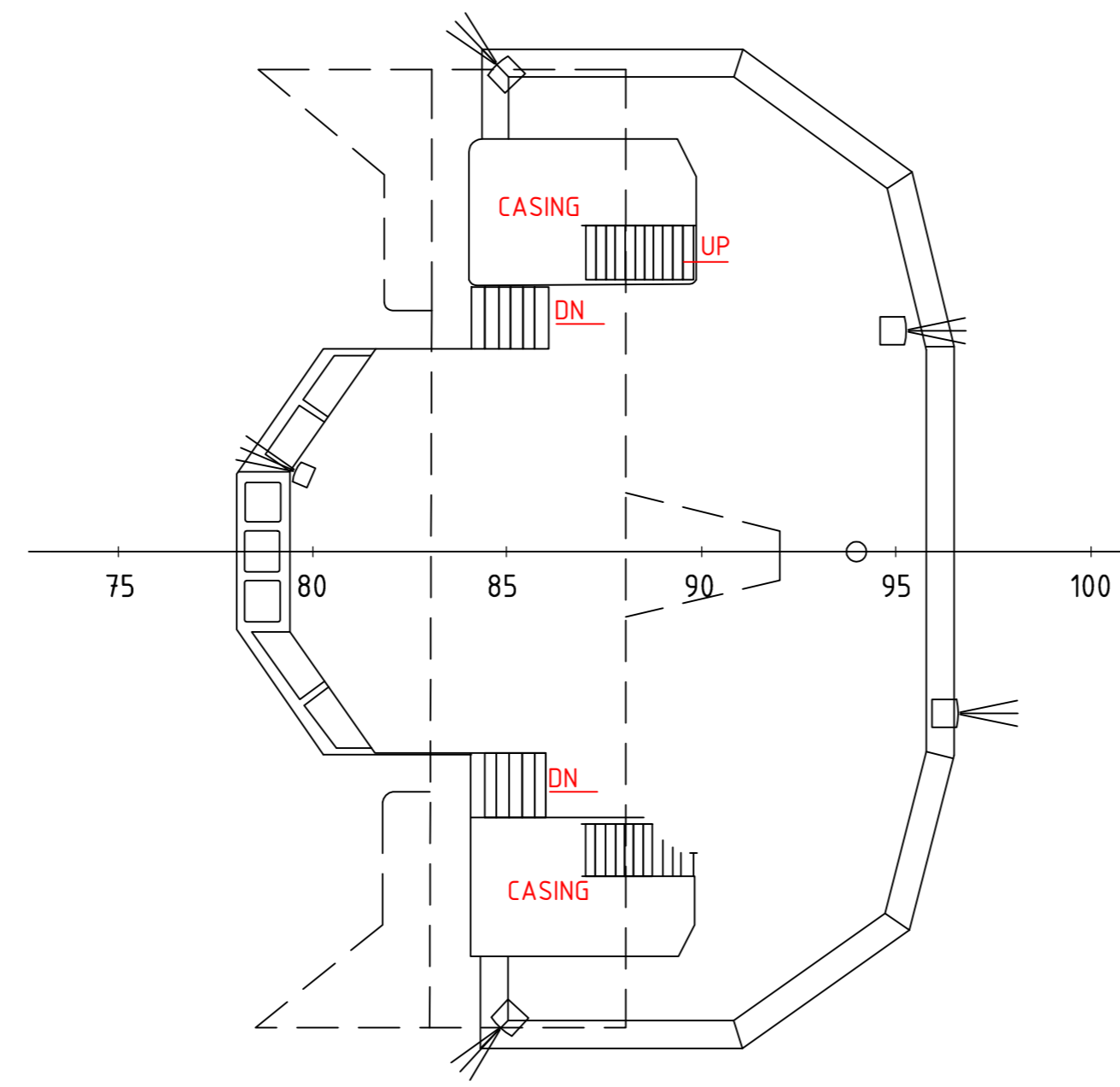
- FiFi-system 2x 3000 m³/h
 height 130m, wide 60m
- Total decks load ≈ 1400 tons
- Decks strength ≈ 6 tons/m²
- Decks space ≈ 610m²
- Bollard pull ≈ 142 tons
- Service speed ≈ 12 knots on two main engines
- Max speed ≈ 16.5 knots on four main engines

DATE	APPROVED	DATE	APPROVED	DATE	APPROVED
GENERAL ARRANGEMENT					
FORMAT	A0	OWNER	INNOVEN Marine Service GmbH & Co. KG		Nr. of Sh
SCALE	1:100	YARD			2
DRAWN	DH	B. No.			
DATE	24-05-2017	Proj.			
CH		Draw	000-001	Rev	1
<small>NOTICE: This drawing and the information it contains are the property of INNOVEN MARINE SERVICE GmbH & Co. KG and may not be reproduced or used for any purpose except by written permission of INNOVEN MARINE SERVICE.</small>					

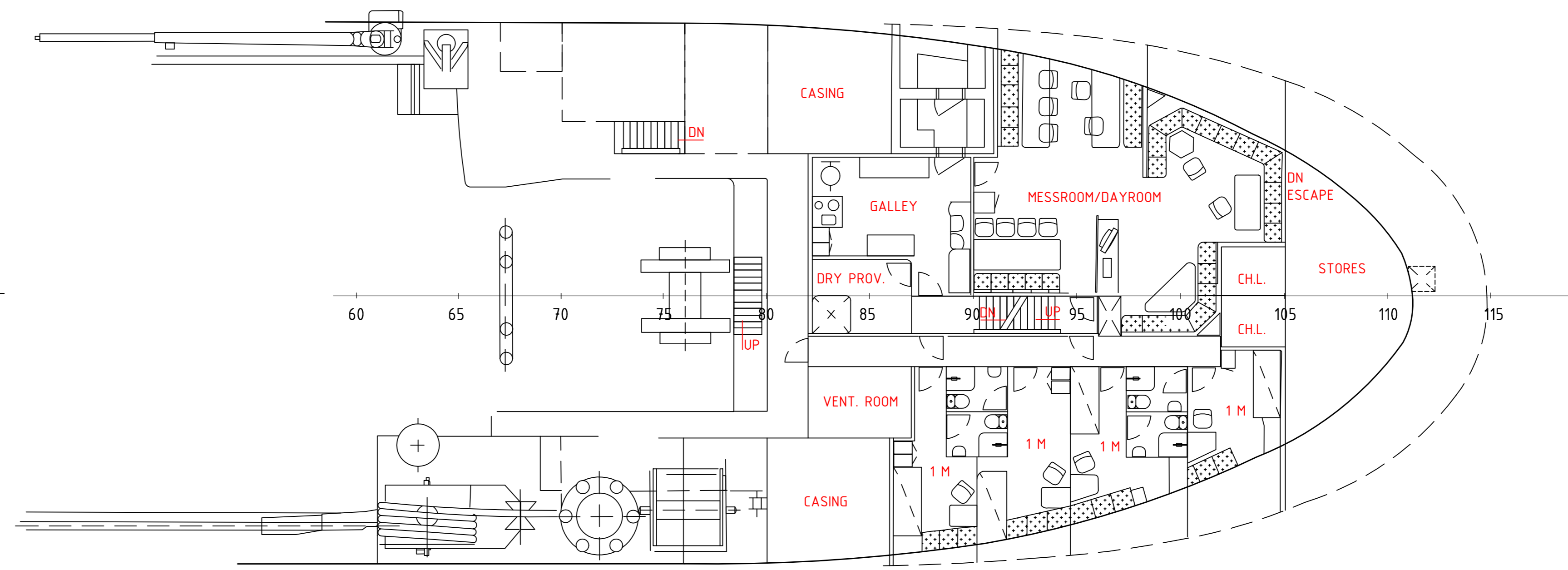
FI-FI PLATFORM



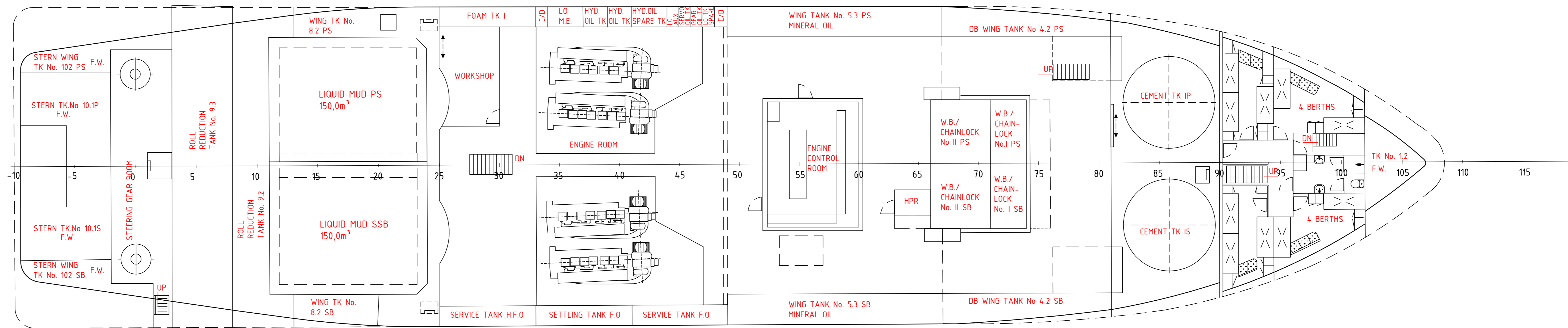
TOP OF WHEELHOUSE



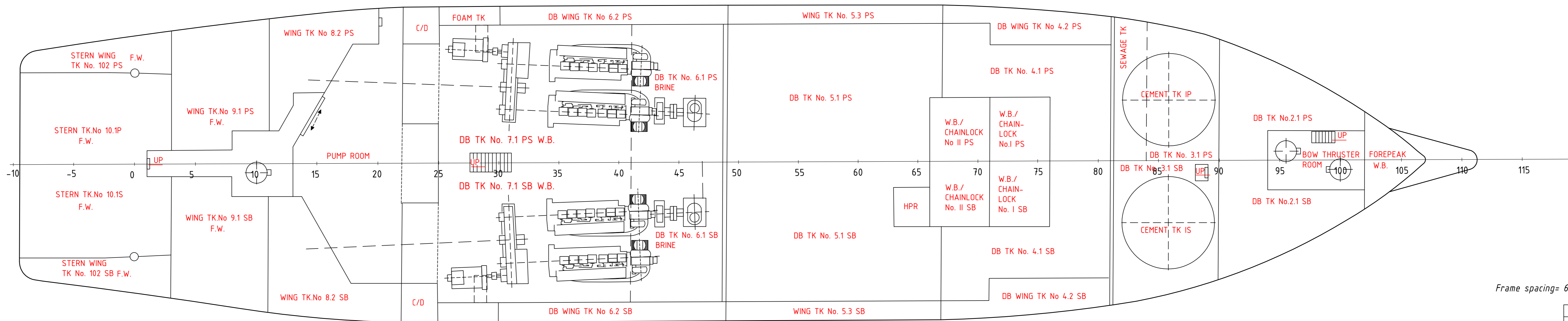
01 ACC. DECK



1. DECK



2. DECK



VS 469.2 AHTS

IMO NR :8302088
 MMSI NR :21 88 62 000
 CALL SIGN :DHXJ2

Class :Lloyd's Register
 Notation :100A1 (AHTS Suspended),
 Fire-Fighting Ship 1
 (3000 M3/h) with Water
 Spray, Oil Recovery,
 RD(2.4), WDL (+)
 LMC, UMS, DP (AM)

Keel laying date :1984
 Re-Fit :2017

Principal Particulars
 Length o.a. 75.00 m
 Breadth mld. 16.00 m
 Depth 1 Deck 7.40 m
 Depth 2 Deck 4.60/5.00 m

Gross tonnage = 2295 tons
 Net tonnage = 688 tons
 Main propulsion= 4x 2310 kW = 9240kW
 Auxiliary power= 3x 298 kW = 894kW

- FiFi-system 2x 3000 m³/h height 130m, wide 60m
- Total decks load ≈ 1400 tons
- Decks strength ≈ 6 tons/m²
- Decks space ≈ 610m²
- Bollard pull ≈ 14.2 tons
- Service speed ≈ 12 knots on two main engines
- Max speed ≈ 16.5 knots on four main engines

Approved:	Date:	Approved:	Date:
Approved:	Date:	Approved:	Date:

GENERAL ARRANGEMENT DECKS VIEW		
FORMAT: A0	OWNER: INNOVEN Marine Service GmbH & Co. KG	No of Sh: 2
SCALE: 1:100	YARD:	2
DRAWN: DH	B. No.:	Sheet
DATE: 24-05-2017	Proj:	000-001
CH:	Draw:	Rev:
NOTICE: This drawing and the information it contains are the property of INNOVEN MARINE SERVICE GmbH & Co. KG and may not be reproduced or used for any purpose except by written permission of INNOVEN MARINE SERVICE.		2